



Venture for
Tomorrow

Product List

WE WILL DO OUR BEST FOR YOUR SUCCESS

eden
International

Products

Pre-painted Steel Sheets

As sheet plates colored or pattern-painted on galvanized steel sheet, aluminum steel sheet, cold rolled steel sheet, etc. by printing or painting, they may have beautiful and various colors and patterns available. They are used to make appearances of building materials and home appliances refined.



Specification

- They are used in various applications such as external and internal building materials with wide range of colors and gloss.
- Excellent processability, weather resistance, durability, etc. (building materials).
- Excellent in expression of special properties and metallic texture of products requiring processability (Fridge, washing machine, refrigerator door, TV case)
- Excellent wear resistance (TV back cover)
- Excellent corrosion resistance and processability (Air conditioner outdoor unit)
- With various patterns and colors, applied excellently depending on applications of architecture and home appliances.
- Excellent chemical resistance and processability.
- Possible to control various kinds of protective film and adhesive strength and they have adhesive quality of films.



Cold Rolled Steel Sheets

It is a steel plate smooth and glossy with uniform thickness by being washed with acid and rolled with cold rolling strip mill or reverse rolling mill. Because they have beautiful surface, resistance to pressing, and can be processed even in a long state, it is used in a wide range of applications. They are used for automobile bodies, measuring instruments, and electrical appliances, and particularly durable consumer goods.



Specification

| EN 10130 / EN 10139 | | JIS G3141 | KS D3512 | ISO 3574 |
|---------------------|--------|-----------|----------|----------|
| DC01 | 1.0330 | SPCC | SPCC | CR1 |
| DC02 | 1.0347 | SPCD | SPCD | CR2 |
| DC03 | 1.0338 | SPCE | SPCE | CR3 |
| DC04 | 1.0312 | SPCF | SPCF | CR4 |
| DC05 | 0.0873 | SPCG | SPCG | CR5 |
| DC06 | 1.0898 | - | - | - |

Characterize



| Type | Features and Applications |
|---|--|
| Commercial Quality | Used for relatively simple molding, rolling, home appliances and automobiles |
| Drawing Quality | Used to manufacture products after rolling, auto parts |
| Deep Drawing Quality (DDQN) | Used for non-aging and demanding processes and molding, home appliances |
| high strength Commercial Quality | Used for high yield and impact resistant products by adding Nb, Cr, V, automobiles |
| high strength Drawing Quality | Used to manufacture automobile parts drawing and elongation by adding P, Mn |
| Bake hardening Quality | Used to manufacture high yield, high impact resistant home appliances |
| Dual phase Quality | Used as low yield parts for rolling process |



Products

Galvanized Steel Sheets

A steel plate corrosion-resistant and making surface smooth by plating thin steel sheet rolled with a cold rolling mill using zinc. It is mainly used for home appliances, building materials, and internal parts of automobiles.



Specification

| Classification /Size | POSCO | KS | JIS | ASTM | | EN10142 |
|-------------------------------------|----------|---------|---------|-----------|-------------|---------|
| | | D3506 | G3302 | 89 | 95 | |
| General | CGCC | SGCC | SGCC | A526 | A 653-CQ | DX51D |
| For bending | CGCF | SGCD 1 | SGCD 1 | A527 | A 653-LFQ | - |
| For processing | CGCD | SGCD 2 | SGCD 2 | A528 | A 653-DQ | DX52D |
| For deep processing | CGCP | SGCD 3 | SGCD 3 | - | - | DX53D |
| Non-aging deep processing | CGCN | SGCD 3N | SGCD 3N | A642 | A 653-DQSK | DX54D |
| For non-aging extra deep processing | CGCE | - | - | - | - | - |
| For structural use | CGL 35 | SGC 340 | SGC 340 | A446 Gr A | A 653-SQ230 | S220 GD |
| | - | - | - | A446 Gr B | A 653-SQ255 | S250 GD |
| | CGL 41 | SGC 400 | SGC 400 | A446 Gr C | A 653-SQ275 | S280 GD |
| | CGL 45 | SGC 440 | SGC 440 | A446 Gr D | A 653-SQ340 | S320 GD |
| | CGL 50 | SGC 490 | SGC 490 | A446 Gr E | - | S350 GD |
| | CGL 58 | SGC 570 | SGC 570 | A446 Gr F | A 653-SQ550 | S550 GD |
| High strength steel | CGCHS 35 | - | - | - | - | - |
| | CGCHS 40 | - | - | - | - | - |
| | CGCHS 45 | - | - | - | - | - |
| | CGCHS 50 | - | - | - | - | - |
| | CGCHS 60 | - | - | - | - | - |

Characterize

| Material | Features and Applications |
|---------------------|---|
| General | The main applications are home appliances, painted steel sheet materials, pipes, etc. and are used in products that are subject to flat sheets or roll formatting. It is also used for building materials and furniture. |
| For bending | It is used as internal parts of home electronics, lighting devices, cars, building materials, and furniture and for applications required for substance guarantee by bending processing. |
| For deep processing | It is used for applications that require excellent processability and age guarantee. It is mainly used for air conditioning panels, vacuum covers, and auto parts. |
| For structural use | It is used mostly for building materials and for products that require high strength, such as the deck plate, dust Purlin, and panels. It is difficult to secure processability, so it cannot be used when drawing is required. |
| For processing | It is used for applications that require drawing during processing and is mainly used for home appliances and automobile parts. |

Products

Galvannealed Steel Sheets

A product with iron-zinc alloy layers through special heat treatment on molten galvanized layer to enhance weldability of galvanized steel sheet and corrosion resistance after coating. It is mostly used for automobiles requiring high corrosion resistance after painting.



Specification

- A product with alloyed coating layers after zinc heated on materials and sheets that is more excellent in weldability, paintability, and corrosion resistance after plating thanks to the ingredient Fe on the alloyed layer than galvanized steel sheet.



Products

Zinc Aluminium Alloy Coated Steel Sheets

Galvalume is an aluminum (Al) -zinc (Zn) high corrosion resistant hot-dip galvanized steel sheet. The plating layer consists of 55% of aluminum (Al), 43.4% of zinc (Zn), and 1.6% of silicon (Si) in terms of weight ratio. It is the product with ideal combination of durability, heat resistance and acid resistance.



Specification

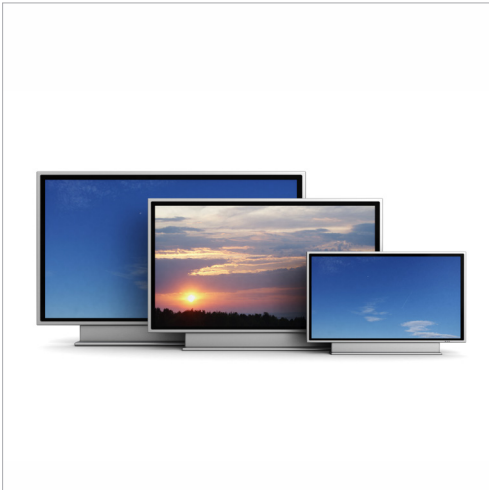
- Compared with galvanized steel sheet, it has an excellent durability for a long time.
- Excellent in heat resistance.
- Good in heat reflexivity.
- Beautiful surface appearance.
- Paintability and processability almost same as galvanized steel sheet.
- Easy to weld under proper welding conditions.



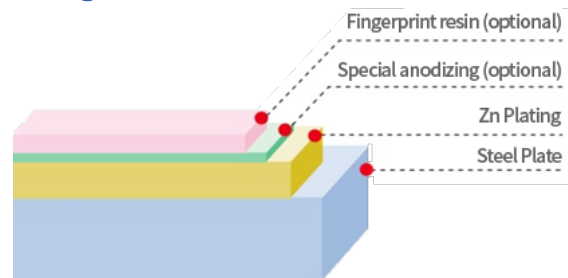
Products

Electro Galvanized Steel Sheets

It is a product that has high corrosion resistance by electroplating zinc with cold rolled steel (CR) material that contains less zinc coating amount than galvanized steel sheet (GI) but has uniform plating layer thickness, and beautiful surface, and contains mechanical properties of the cold rolled steel sheet (CR) because it is plated at low temperature.



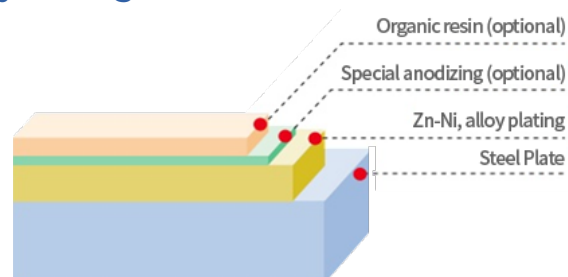
Zn Plating



Various post-processing functions available, such as non-treatment, coating, phosphate, anti-fingerprint, and black resin are available, and are mainly used for home appliances.



Alloy Plating



Possible to select oil, phosphate, functional resin (fuel tank), etc. and be mainly used for automobiles.

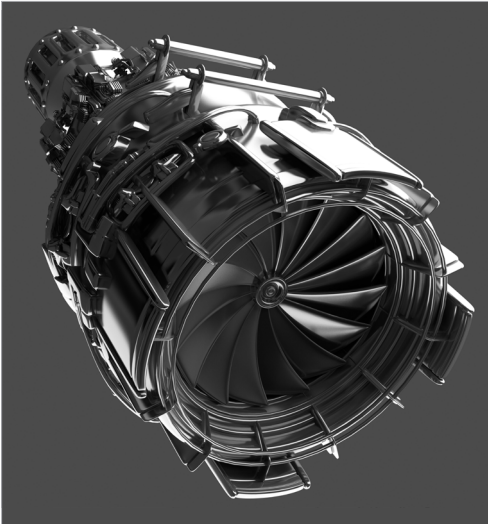
Type of surface treatment

| Type | Features |
|----------------------------|--|
| Phosphate treatment | It is applied to plated steel sheets that are used without any special pretreatment, and processability may be deteriorated due to deterioration of surface friction coefficient. |
| Chromate treatment | Surface treatment to prevent white rust from occurring on plating surface but it must be immediately dried when it gets wet from the outside, and it should be carefully handled upon processing because it is not anti-fingerprint. |
| Anti-fingerprint treatment | A surface and organic film treatment to prevent defects such as fingerprints and stains remaining on the surface during the handling or processing of plating products. It is excellent in processability. |
| Lubricant treatment | It has excellent processability and has the same characteristics as anti-fingerprint steel plate. |
| Oil | It is treated for the purpose of temporarily protecting the surface, and it has a great effect of suppressing white rust. To use by phosphate treatment, it may be oiled without treatment. |
| No treatment | It should be used immediately after delivery because white rust may occur because surface has not been treated. |

Products

Electrical Steel Sheets

Electrical steel sheets products are used as materials for electrical equipment such as transformers and motors. Unlike ordinary carbon steels, which are important for processability, they are functional products that emphasize electromagnetic properties.



Grain-oriented electrical steel sheet

Grain-Oriented Electrical steel sheets (GO) is a product made for magnetization of crystals in parallel to the rolling direction. It has excellent magnetic properties in a rolling direction. Mainly, it is widely used for large, medium, and small transformers, distribution transformers, reactors, etc.

Non-oriented electrical steel sheet

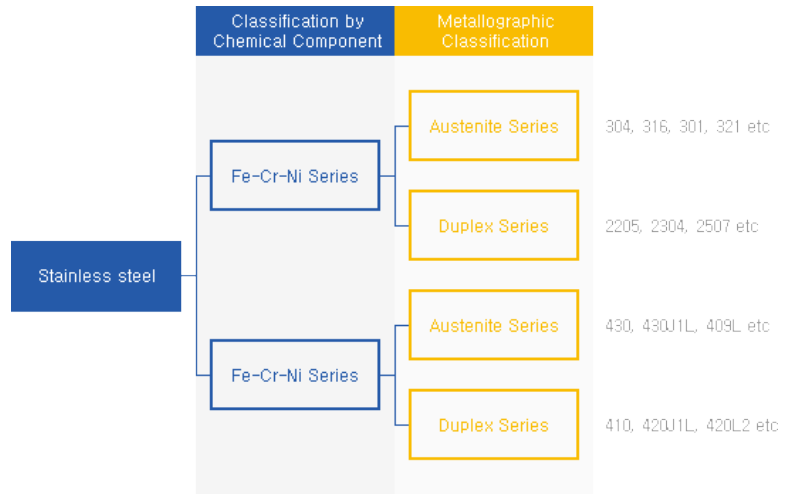
Non-oriented electrical steel sheets (NO) is an electrical steel sheet that shows uniform magnetic properties in the rolling direction and it is widely used for large generators, small precision motors, rotating machine cores, and small transformer iron cores.



Products

Stainless Steel Sheets

Stainless steel sheets is easily seen in our lives because of its corrosion resistance and beautiful surface without painting or plating. It is mainly used for automobile exhaust pipes, kitchen utensils, electronic products, and building materials, etc.



Specification

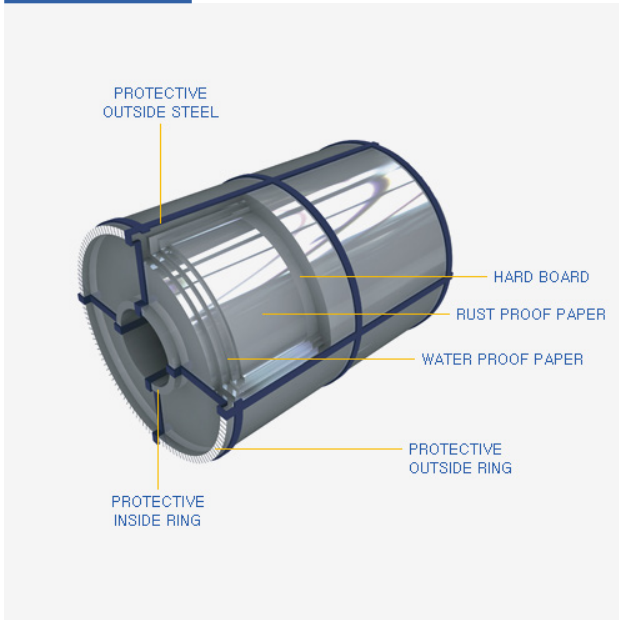
- There are many kinds of various surface processing, and the surface is beautiful.
- Excellent corrosion resistance and high wear resistance.
- High strength, high fire resistance and heat resistance.
- Excellent in processability and economical feasibility.



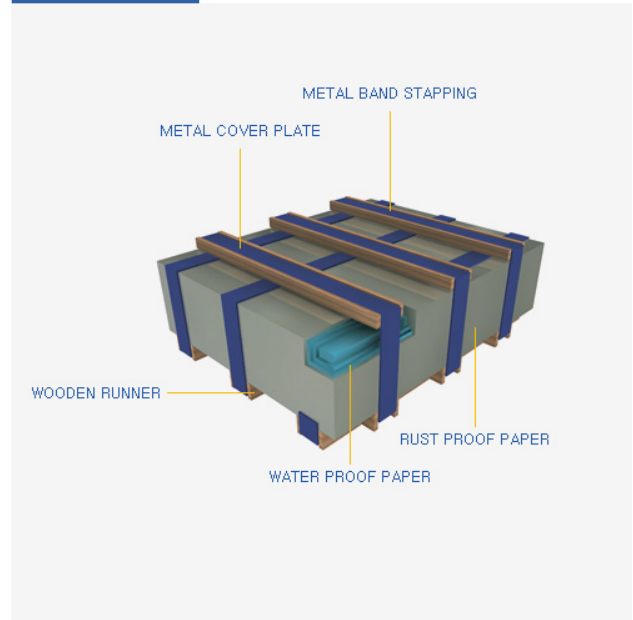
Products

Packing *We will do our best for your success*

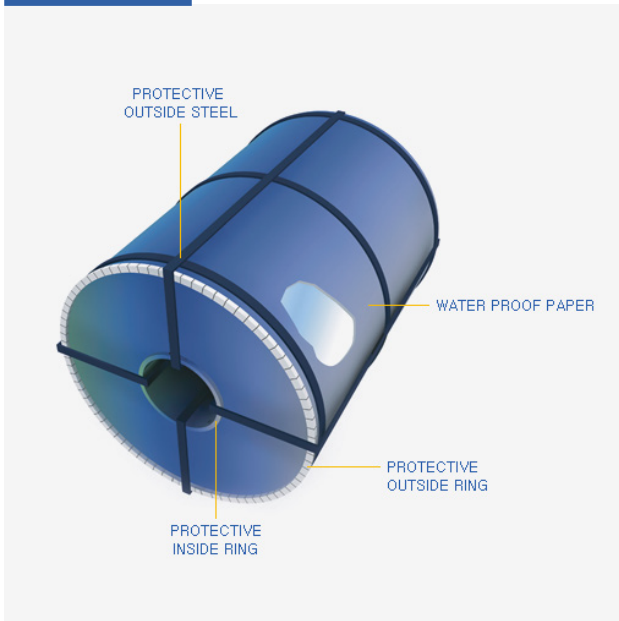
Coil



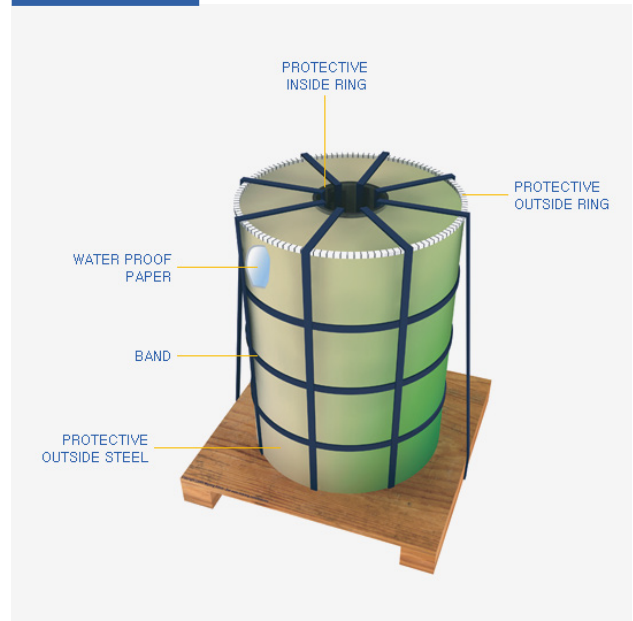
Sheet



Horizontal



Vertical





eden
International



WE WILL DO OUR BEST FOR YOUR SUCCESS